



# Elementary Classroom Furniture

*Note: All pictures are for illustration purposes only. Actual furniture may vary. Prices subject to change. (Revised 5/23/2025)*

# Aperture Shape Desk



Video demo of different ways the desk can be set up:

<https://vimeo.com/92789102>



Fashion Grey #D381-01 Laminate

Student Desk, Aperture Shape, 24" x 40", (adjustable height 25" - 38" for sitting or standing),  
Laminate Color: Fashion Grey, High Gloss Dry Erase Surface with Black Band Edge  
Includes Casters on 2 of the Legs

Recommended Settings:

Grade	Sitting Height	Standing Height
TK:	22" H (not adjustable, no casters)	N/A
K-1 <sup>st</sup> grade:	25" H	32" H
2nd-3rd grade:	27" H	34" H
4th-5th grade:	29" H	36" H

**Order Info: Vendor: Concepts / Mfr. C&H Equip. Part #: CH-AP2440P, \$407.19 each**

# Triangle Shape Desk

Hard plastic standard color:



Gray  
K

Student Desk, Triangle Shape, 28" x 28" x 36", (adjustable height 24" - 42" for sitting or standing),  
Hard plastic surface color: Gray  
Includes Caster on Center Leg

## Recommended Settings:

Grade	Sitting Height	Standing Height
TK:	Not recommended	32" H
K-1st grade:	25" H	32" H
2nd-3rd grade:	27" H	34" H
4th-5th grade:	29" H	36" H

**Order Info: Vendor: Concepts / Mfr. C&H Equip. Part #: CH-TR282836P, \$309.08 each**

# Half Moon Tables



Fashion Grey #D381-01 Laminate

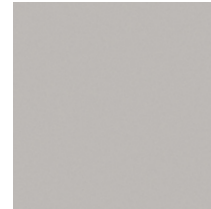
Activity Table, Half Moon shape, 36"W x 72"L, (adjustable height 22"-30"H),  
Laminate Color: Fashion Grey, High Gloss Dry Erase Surface with Black Band Edge

Recommended settings:

	<u>For sitting</u>
TK-1st grade:	25" H
2nd-3rd grade:	27" H
4th-5th grade:	29" H

**Order Info: Vendor: Virco / Mfr. Virco Part #: X48COOP72DECHRM, \$529.60 each**

# Nest Tables (Half-Moon/Wave)



Fashion Grey #D381-01 Laminate

Activity Table, Half-moon/wave (Nest) shape, 30"W x 54"L, (adjustable height 22"-30"H) ,  
Dry Erase Surface with black band edge, (2 placed together make a round table, or can be  
used in place of the "horseshoe" by slight separation with teacher in the center)

Laminate Color: Fashion Grey, High Gloss Dry Erase Surface with Black Band Edge

Recommended settings:

	<u>For sitting</u>
TK-1st grade:	25" H
2nd-3rd grade:	27" H
4th-5th grade:	29" H

**Order Info: Vendor: Virco / Mfr: Virco Part #: X48NEST54DECHRM, \$263.68 each**

# Student Chairs



Student Chair, Ergonomic, Specify Color from options shown above. (actual color may vary)

Recommended Sizes:

Grade	Height	Part #
TK:	12" H	D10D
K-1st grade:	14" H	D10C
2nd-3rd grade:	16" H	D10B
4th-5th grade:	18" H	D10A

**Order Info: Vendor: Office & Ergonomic Solutions Inc. / Mfr. Artcobell Part #: See above, 18" (\$52.60), 16" (\$52.60), 14" (\$45.20), 12" (\$45.20) each**

# Backless Stools



Stool, backless, adjustable height (19"-27"), Specify Seat Color from options shown above (chrome legs). These are for use as an option to sit at standing height desks.

Recommended settings:

Grade	Height
TK-1 <sup>st</sup> grade:	20" H
2nd-3rd grade:	22" H
4th-8th grade:	24" H

**Order Info: Vendor: Office & Ergonomic Solutions Inc. / Mfr. Artcobell Part #: 801, \$109.34 each**

# Soft Seating



Gray



Green



Orange



Blue



Slate Gray



Midnight Blue



Autumn Orange

Grade	Seat Height	Part #
TK-3rd grade:	14" H	LC812
4th-8th grade:	18" H	LC780

## Order Info: Vendor: Lakeshore Learning

Flex-Space Modular Chair, 25"H x 20"W x 21"D (seat height 14"), Mfr Part #: LC812, \$337.46

Modern Edge Modular Chair, 34"H x 24"W x 27" (seat height 18"), Mfr Part #: LC780, \$563.06

Individual pieces may be set up in any variety of configurations to create single chairs, sofa, etc.



# Wobble Stools



Stool, Active Learning, Specify Size from options shown below and Color from options shown above  
(Blue, Red, Green, Black or Navy)

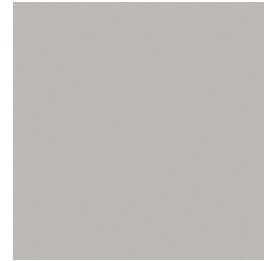
Recommended Heights:

TK-2<sup>nd</sup> grade: 15" High x 13" seat diameter (#LNT-3046-15)

3<sup>rd</sup>-5<sup>th</sup> grade: 18" High x 13" seat diameter (#LNT-3046-18)

**Order Info: Vendor: School Outfitters / Mfr: Learniture, Part #: see above, 15" (\$63.88) & 18" (\$67.88) each**

# Mobile Teacher Desk



Color: Fashion Grey #D381-01

Teacher Desk, peninsula-shape with removable podium, 30"w x 72"L x 29"H,  
2 locking file drawers, center pencil drawer, black metal frame with locking casters  
Laminate Color: Fashion Grey, High Gloss Dry Erase Surface with Black Band Edge

**Order Info: Vendor: Concepts School & Office Furnishings / Mfr: C&H  
Equipment Part #: CHSP3072P-CD, \$1,066.16 each**

# Teacher Ergonomic Chair

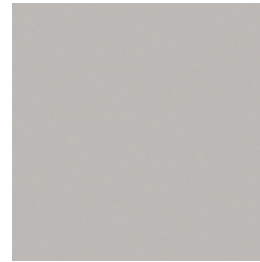


Ergonomic Task Chair, Mesh back with upholstered seat

- Chair with Arms
- Fabric Color: #2570 Graphene

**Order Info: Vendor: Office & Ergonomic Solutions / Mfr: Office Master Part #: YS72/KR-200, \$319.80 each**

# Presentation Table



Color: Fashion Grey #D381-01

Presentation Table, 24"w x 48"L , chrome legs,  
adjustable height (22"H – 30"H) (set to 29" standard height)

Laminate Color: Fashion Grey, High Gloss Dry Erase Surface with Black Band Edge

**Order Info: Vendor: Virco / Mfr: Virco Part #: X482448DECHRM \$219.20 each**

# Teacher Chair for Small Groups



Onyx

Adult Chair (18" Chair with Casters), Color: Onyx  
For use with small groups at activity tables

**Order Info: Vendor: Office & Ergonomic Solutions Inc. / Mfr. Artcobell Part #: D16A, 18", \$86.73 each**

# Outdoor Tables



Octagon Shape Outdoor Table, 46" Top,  
Seats 8



Rectangle Shape Outdoor Table, 8 ft. long,  
Seats 10-12

Can be used outside the classroom(s) for outdoor learning if space is available, May also be used in lunch area(s).  
Black Frame, Specify Color for Top and Benches:

**Order Info: Vendor: Dave Bang Associates**

**Mfr: Wabash Valley**

**Octagon Part #SG145D, \$1,601.00 each**

**Rectangle Part #SG111D, \$1,460.00 each**



# Storage for New Relocatable Classrooms

*\*District standard is two of each piece (Straight Shelf, Tall Locking Cabinet and Cubby), additional pieces may be purchased with site funds\**

## Rainbow Accents Super-Sized Adjustable Mobile Straight-Shelf



**Product Dimensions: 35.50" H x 48" W x 15" D**

**Color: Gray/Blue Edge Banding**

**Order Info: Vendor: Office & Ergonomic Solutions Inc. / Mfr. Jonti-Craft, Part #: 26932JCWW112 \$584.99 each**



## Rainbow Accents Super-Sized Adjustable Mobile Straight-Shelf



**Product Dimensions: 72" H x 36" W x 24" D**  
**Color: Gray/Blue Edge Banding**

**Order Info: Vendor: Office & Ergonomic Solutions Inc. / Mfr. Jonti-Craft, Part #: 5950JC112 \$1,358.99 each**



## **Rainbow Accents 20 Tub Mobile Storage**



**Product Dimensions: 29.50" H x 60" W x 15" D**  
**Color: Gray/Blue Edge Banding**

**Order Info: Vendor: Office & Ergonomic Solutions Inc. / Mfr. Jonti-Craft, Part #: 0421JCWW000 \$895.50 each**

## Mobile Backpack Cart – With Clear Cubbie Trays

\*Only if hooks cannot be installed by M&O due to portable configuration\*



**34 double-hooks (68 hooks total)**

**Product Dimensions: 50" H x 55" W x 27" D**

**Order Info: Vendor: Office & Ergonomic Solutions Inc. / Mfr. Jonti-Craft, Part #: 39480JC \$926.99 each**